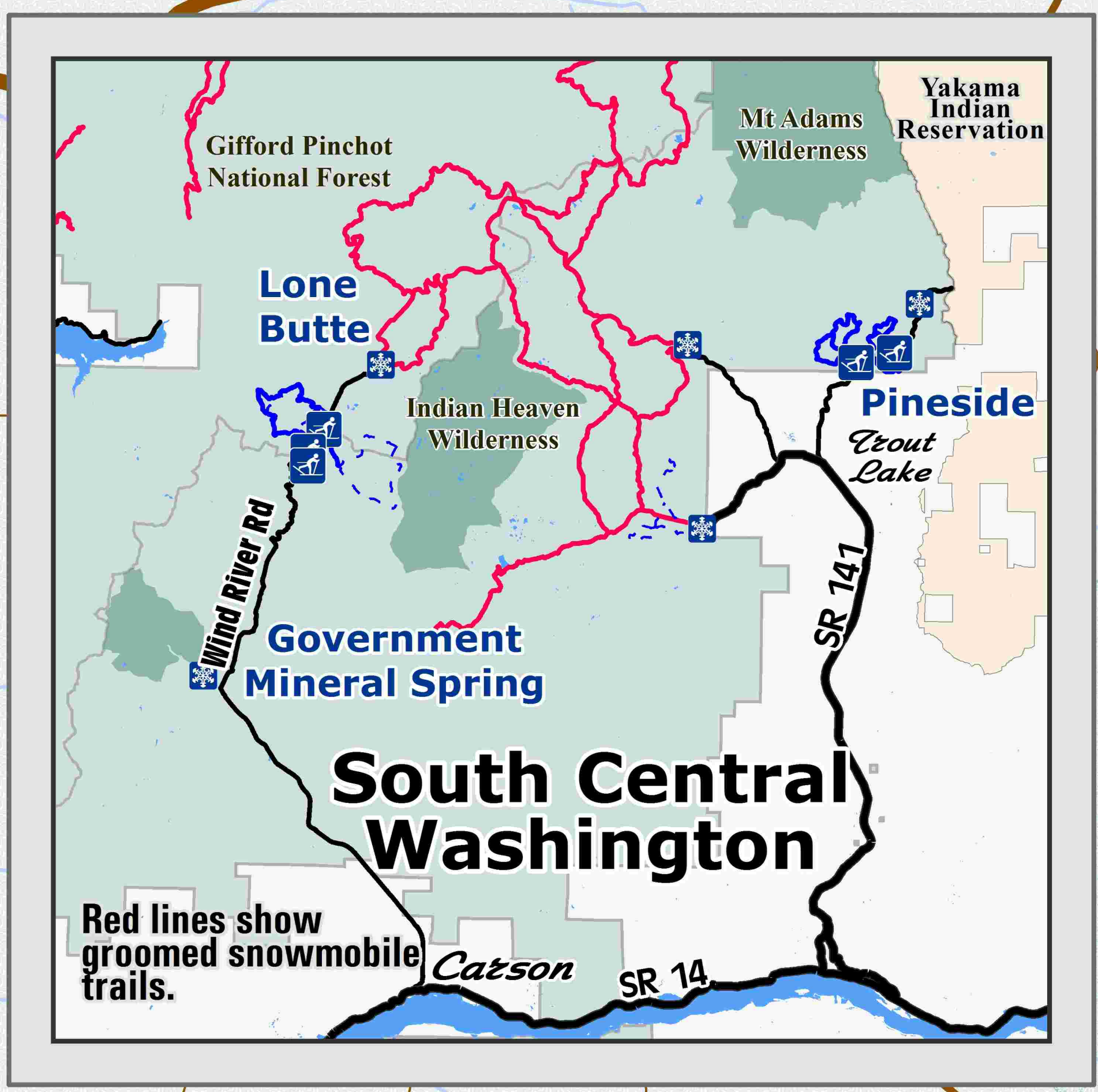


Welcome  
**Koshko  
 Oldman Pass  
 McClellan Meadows  
 Sno Parks**  
**Groomed Trail  
 System**



- Explanation**
- Non-Motorized Sno-Park
  - Groomed Ski Trail
  - Marked Ski Route
  - View
  - Access Road
  - Major Forest Road
  - Road
  - Wilderness Area
  - Gifford Pinchot National Forest

**Wind River Trail System  
 has 24 kilometers (15 miles) of  
 groomed cross country ski trails.**

Road Number  
 Kilometers

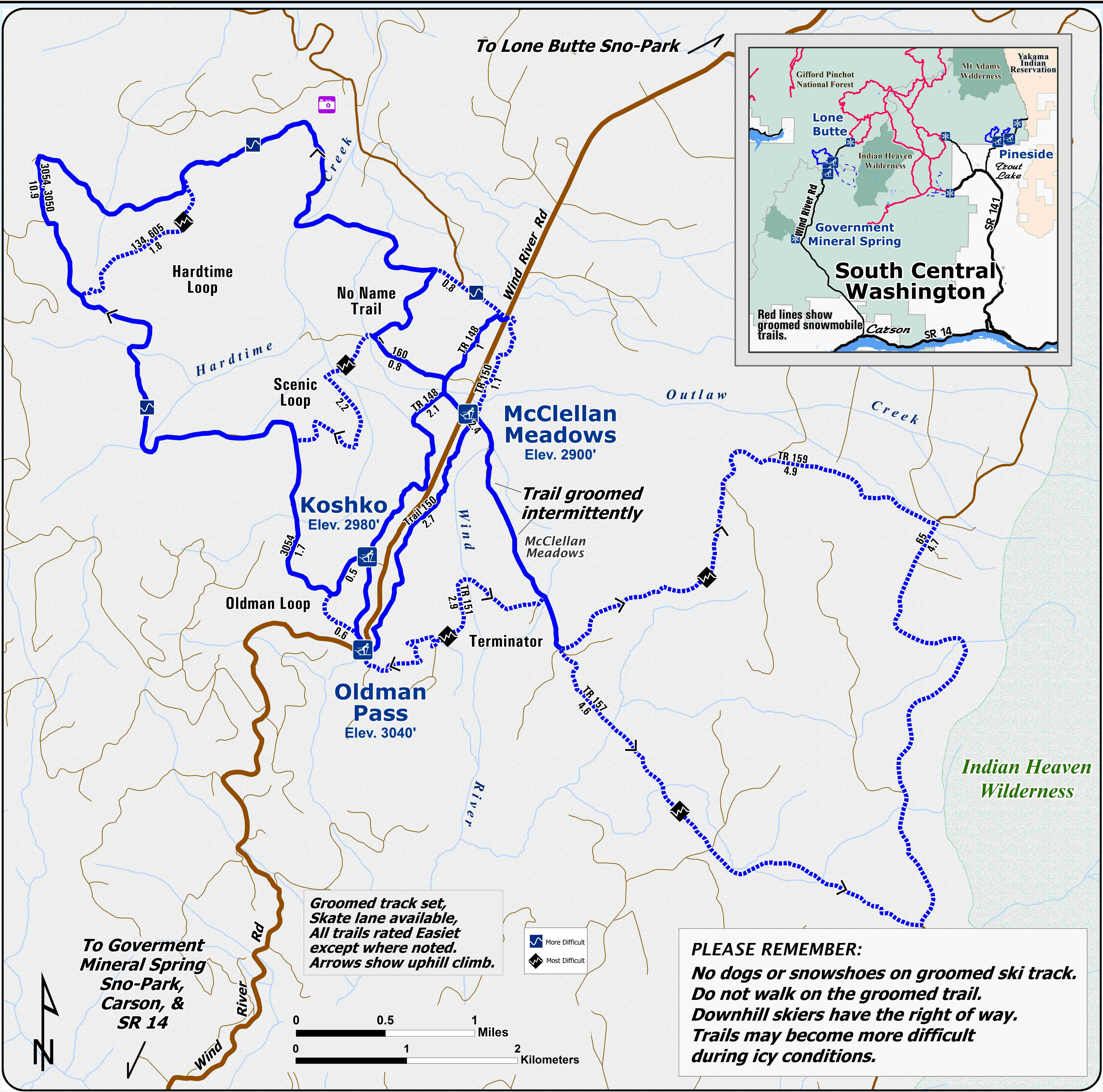
*Snow grooming equipment may  
 be on the trail at any time.*

*Trail grooming schedules may change  
 without notice due to snow conditions,  
 temperatures, equipment breakdowns, etc.*

*Be aware of potential avalanche danger,  
 check [www.nwac.us](http://www.nwac.us) before you leave home.*

*Trail grooming schedules and maps at  
[www.parks.wa.gov/winter](http://www.parks.wa.gov/winter)  
 Please report errors or comments to:  
[winter@parks.wa.gov](mailto:winter@parks.wa.gov)*

**For Emergency Call 911  
 Skamania Co. Sheriff 509-427-9490**



**Groomed track set,  
 Skate lane available,  
 All trails rated Easiest  
 except where noted.  
 Arrows show uphill climb.**

- More Difficult
- Most Difficult

**PLEASE REMEMBER:**  
**No dogs or snowshoes on groomed ski track.**  
**Do not walk on the groomed trail.**  
**Downhill skiers have the right of way.**  
**Trails may become more difficult  
 during icy conditions.**

**To Government  
 Mineral Spring  
 Sno-Park,  
 Carson, &  
 SR 14**

**To Lone Butte Sno-Park**