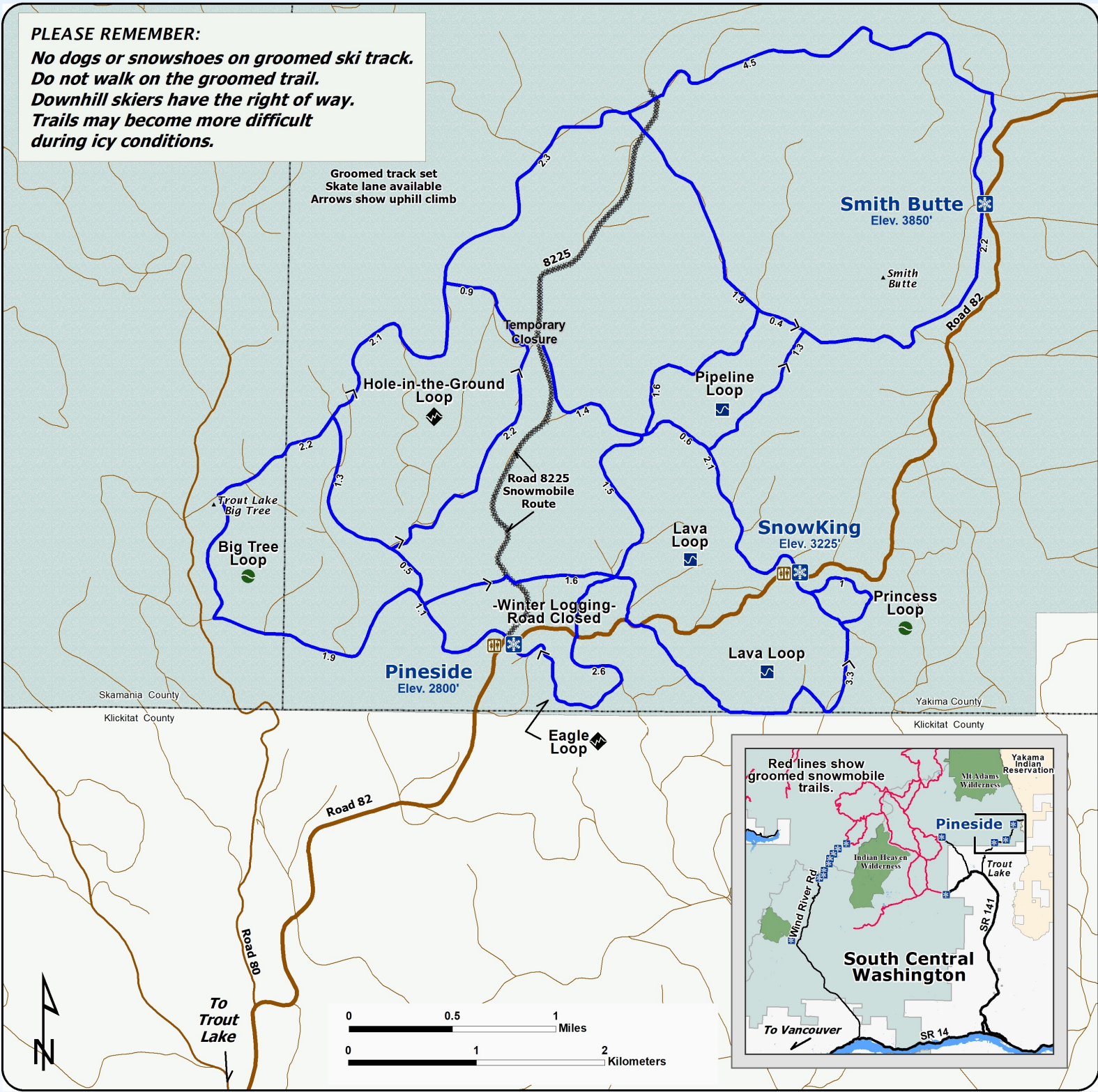


PLEASE REMEMBER:

**No dogs or snowshoes on groomed ski track.
Do not walk on the groomed trail.
Downhill skiers have the right of way.
Trails may become more difficult
during icy conditions.**

Groomed track set
Skate lane available
Arrows show uphill climb



Welcome **Pineside Snow King Smith Butte Sno-Parks** **Groomed Trail System**

Explanation

- Sno-Park
 - Temporary Closure
 - Groomed Ski Trail
 - Access Road
 - Major Forest Road
 - Road
 - Gifford Pinchot National Forest
-
- Easiest
 - More Difficult
 - Most Difficult

**Eastside Trail System
has 25 miles (40km) of
groomed cross country
ski trails.**

Kilometers

*Snow grooming equipment may
be on the trail at any time.*

*Trail grooming schedules may change
without notice due to snow conditions,
temperatures, equipment breakdowns, etc.*

*Be aware of potential avalanche danger,
check www.nwac.us before you leave home.*

*Trail grooming schedules and maps at
www.parks.wa.gov/winter
Please report errors or comments to:
winter@parks.wa.gov*

**For Emergency Call 911
Yakima Co. Sheriff 509-574-2500
Skamania Co. Sheriff 509-427-9490**

