

# WASHINGTON STATE PARKS

# Junior Ranger Booklet

Play. Learn. Protect.



# How to become a Junior Ranger



This book belongs to:

\_\_\_\_\_ name \_\_\_\_\_,

I am visiting \_\_\_\_\_ park name \_\_\_\_\_ State Park.

To earn my Junior Ranger badge, I will

complete \_\_\_\_\_ your age \_\_\_\_\_ pages in my book.

I will also complete the activities on the next page.



**Dragonfly**  
Ages 4-6



**Salmon**  
Ages 7-11



**Black Bear**  
Ages 12+

Some pages are harder than others. Use the symbols above to find the right pages for your age group. Challenge yourself by trying some of the harder pages.

Draw a picture of yourself.



# Junior Ranger Activities

**Play:** Visit a state park with your family.

What was your favorite thing about your visit? \_\_\_\_\_  
\_\_\_\_\_  
\_\_\_\_\_

**Learn:** Attend a program, read an exhibit sign, read the park brochure or ask a ranger why the park is important.

What did you learn? \_\_\_\_\_  
\_\_\_\_\_  
\_\_\_\_\_

**Protect:** Pick up at least one bag of litter.

Remember to:

- Ask an adult first.
- Use gloves.
- Do not pick up sharp objects.
- Recycle items if possible.
- Wash your hands after you are finished.

Bring your completed booklet to the park office to earn your Washington State Park Junior Ranger badge.



If staff is not available, mail your completed booklet to State Parks headquarters, and we will mail your badge to you. Mail to Junior Ranger, Washington State Parks Headquarters, P.O. Box 42650, Olympia, WA 98504-2650.



# Where are you?

What is the name of the state park you are visiting? \_\_\_\_\_

Use the box below to draw a picture of your favorite place in the park.

**Did you know?**

There are more than 120 state parks in Washington!  
How many can you visit?



*Creative challenge:* What makes this park special to you?

---

---

---

---

# Washington State Parks



As you explore state parks you will notice our logo, also called our shield. Washington State Parks protects Washington's treasured lands, waters and historic places.

## Have fun coloring our shield below!

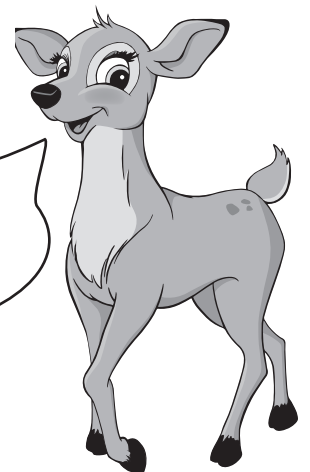


*Creative challenge:*

How many park shields can you find in the park?

\_\_\_\_\_


Washington is sometimes called the **"Evergreen State"** for the forests in the state.



# State Park scavenger hunt

State parks are exciting places to explore! As you explore the park, try to find something which represents each of the items below. Draw or write what you find in the boxes.

Remember to leave what you find for other visitors to discover.



Did you know?  
There are more than 40  
plants that are only found  
in Washington.

Something green

Somewhere an animal lives

Something red

Something growing

Something older than you

A source of water

Something yellow

Something decomposing

Something blue

**Creative challenge:** What was your favorite thing you found while exploring the park and why? \_\_\_\_\_

\_\_\_\_\_

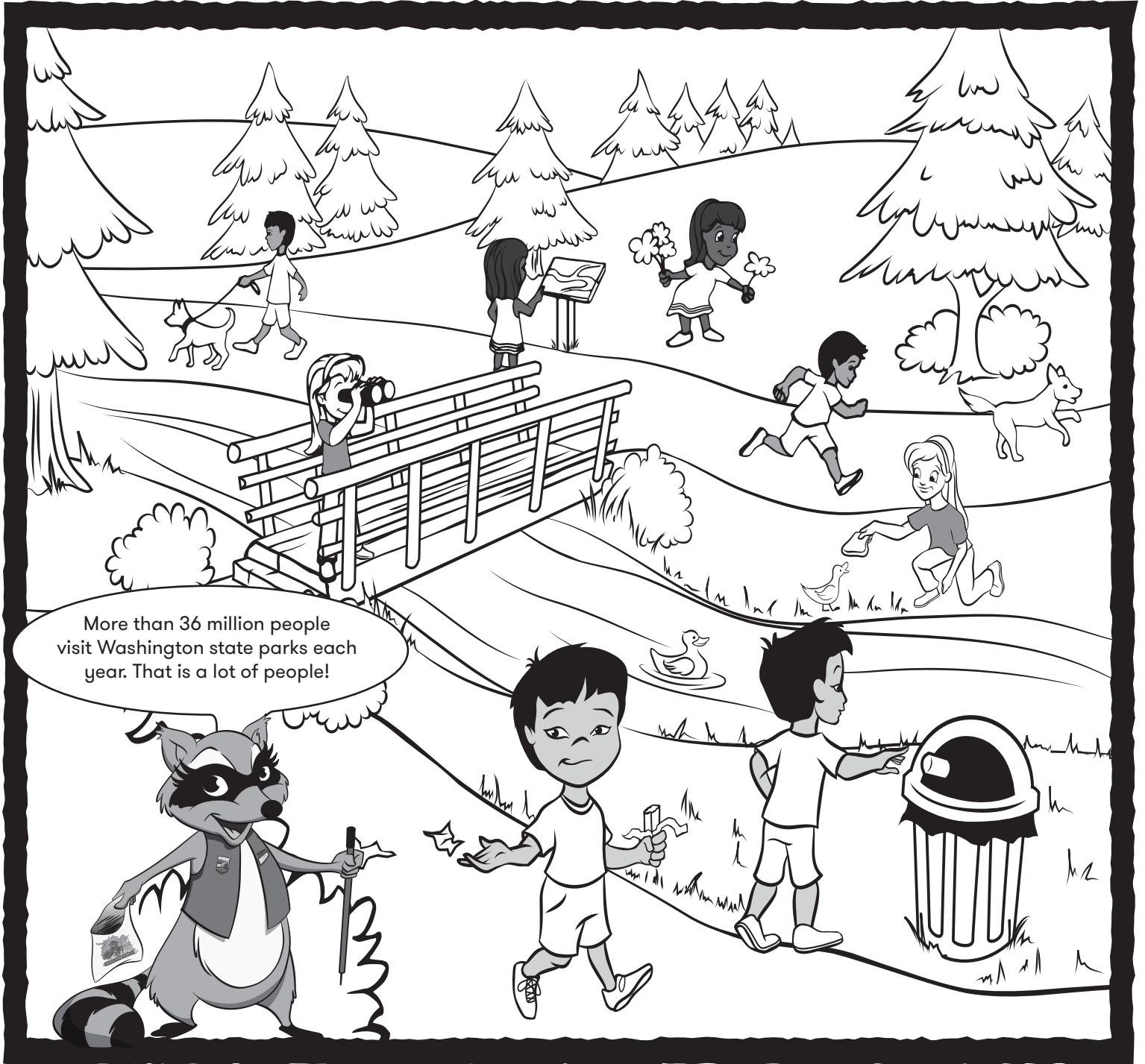
\_\_\_\_\_

# Protecting parks



It is important to help take care of the park while you explore.

- Draw an X through three mistakes that harm the park.
- Draw a circle around three ways that protect the park.



**Creative challenge:** What is one way you and your family can work together to protect the park during your visit? \_\_\_\_\_



# Landscape fire puzzle

Fire and ice have shaped Washington. As you explore, look for clues in the landscape that reveal evidence of volcanic eruptions, glaciers and Ice Age floods. Use the decoder below to help solve the clues on these two pages.

## • Fire and Ice Decoder •

1	2	3	4	5	6	7	8	9	10	11	12	13	14	15	16	17	18	19	20	21	22	23	24	25	26
A	B	C	D	E	F	G	H	I	J	K	L	M	N	O	P	Q	R	S	T	U	V	W	X	Y	Z

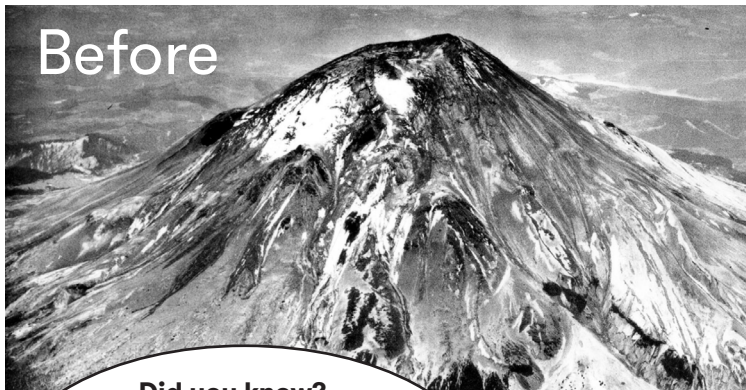
More than 15 million years ago, cracks and vents near the border of Oregon, Washington and Idaho allowed lava to surface. This created thick layers of volcanic rock called \_\_\_\_\_.

**2 1 19 1 12 20**

Clues of these lava flows are evidence of the \_\_\_\_\_ of nature and help scientists understand volcanoes.

**16 15 23 5 18**

## Mount St. Helens



### Did you know?

There are five major volcanoes in Washington: Mount Baker, Glacier Peak, Mount Rainier, Mount St. Helens, and Mount Adams.

On May 18, 1980, Mount St. Helens erupted. As an earthquake shook the **9,677-foot-tall** volcano, the northern flank of the volcano collapsed and it erupted. When the dust settled, it was shorter than before the eruption.

**How much of the volcano's height was lost during the 1980 eruption?**

Height before
_____
- 8,365
=





# Landscape ice puzzle



More than 13,000 years ago, parts of Washington were \_\_\_\_\_ by water or ice.

**3 8 1 14 7 5 4**

Today, the \_\_\_\_\_ River Gorge tells the story of powerful Ice Age

**3 15 12 21 13 2 9 1**

floods equal to 10 times the flow of all the rivers in the world combined.

Ice Age floods are an important part of Washington's history.

Write a poem using the letters of the word "WATER" to begin each line.

W \_\_\_\_\_

A \_\_\_\_\_

T \_\_\_\_\_

E \_\_\_\_\_

R \_\_\_\_\_

**W**ater  
**A**long time ago  
**T**raveled across the  
**E**arth  
**R**ain and snow!

**W**ashington ice  
**A**ll ready  
**T**ravel  
**E**verywhere water  
**R**un, run, run

**Explore more:** Visit the Mount St. Helens Visitor Center to learn about Washington's volcanoes, or stop by the Dry Falls Visitor Center at Sun Lakes-Dry Falls State Park to see a landscape created by Ice Age floods.

# Map of Wa

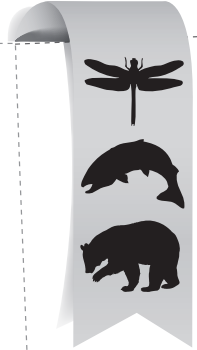
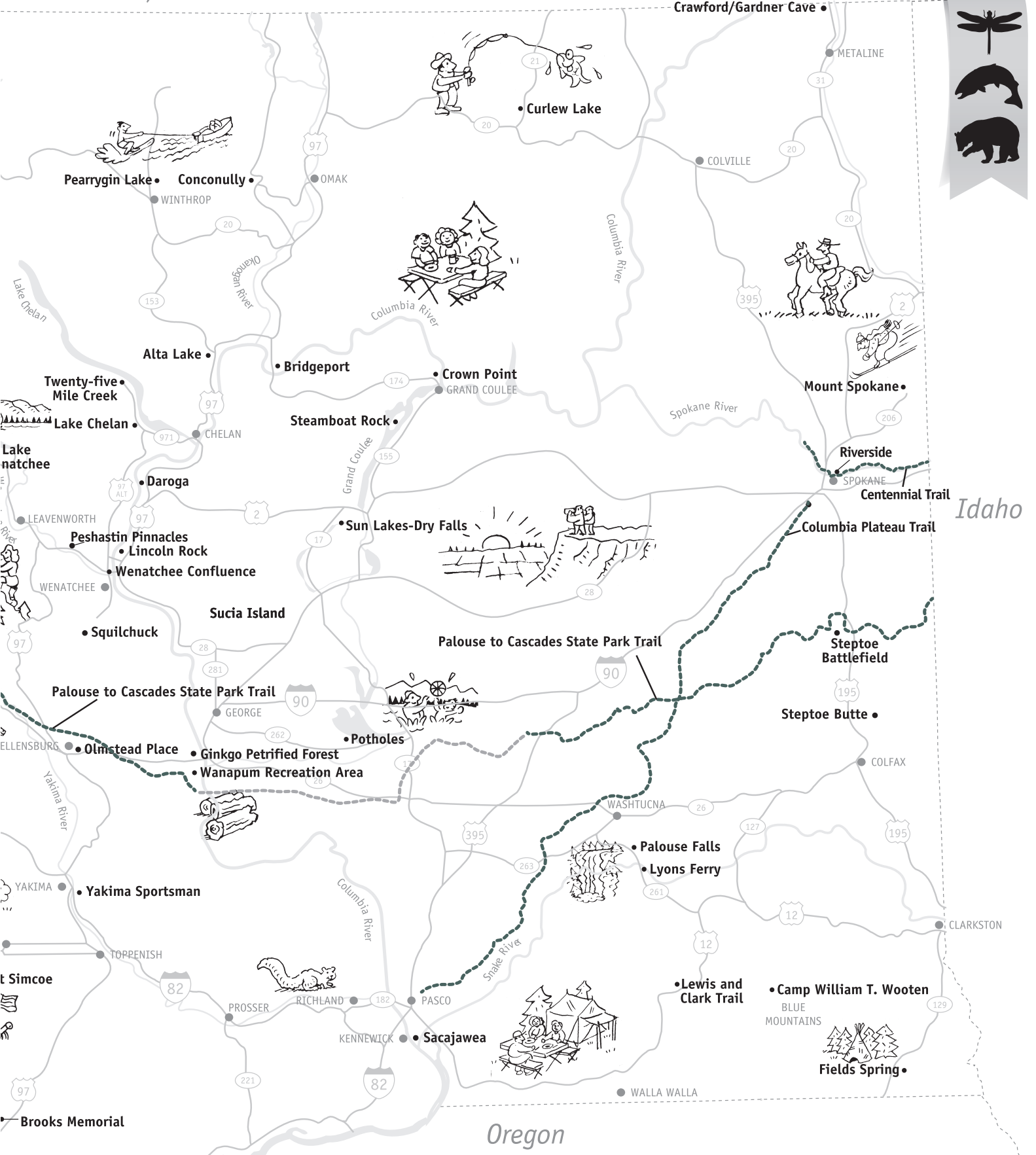
Br



Draw a circle around all of the state parks you have visited.

# Washington State Parks

Northwest Columbia, Canada



Idaho

Oregon

Visit our website at [www.parks.state.wa.us](http://www.parks.state.wa.us) for more information about Washington State Parks.

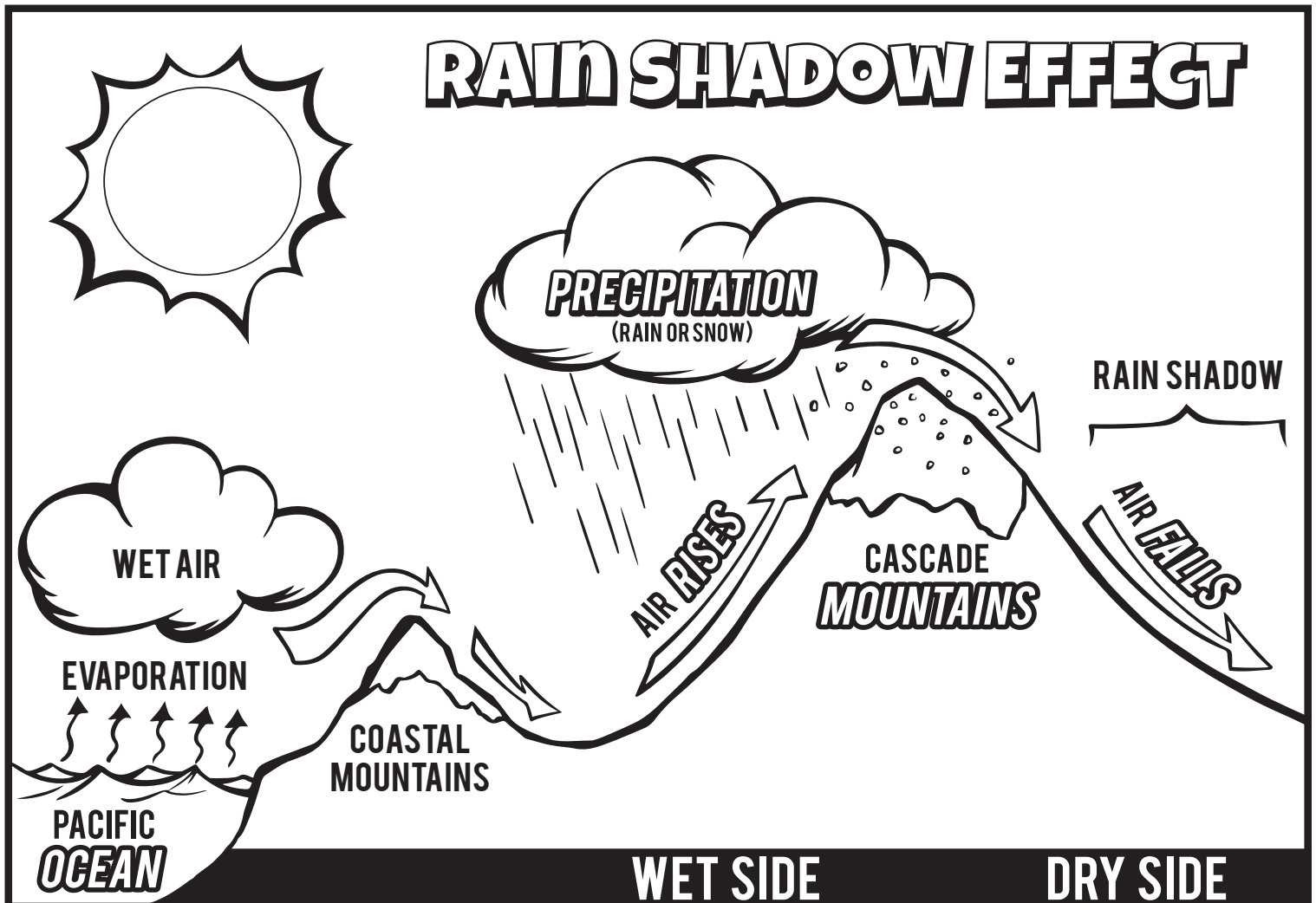


# Wacky weather

Mountain ranges in Washington create wet and dry climates across the state. This is called the rain shadow effect.

Use the bolded words on the diagram to fill in the blanks below and learn about the rain shadow effect.

A rain shadow occurs when evaporation from the **OCEAN** creates wet air. Winds push the wet air east. As the air meets the \_\_\_\_\_ it is blocked, and the air \_\_\_\_\_. The rising air expands and cools causing \_\_\_\_\_ such as rain or snow. The rain and snow create a wet climate on the west side of the mountains. As prevailing winds cross the mountains and the air \_\_\_\_\_ down the opposite side, it warms, creating a drier climate or rain shadow on the east side of the mountains.



# Where's the rain



Washington is known as a rainy state. But did you know that many parts of the state receive less than 20 inches of rain each year? Color the precipitation map to discover the dry and wet areas of the state.



**Precipitation Map Color Coder**

Map Code	Inches of Rain	Color
1	20 or less	Red
2	21 to 40	Yellow
3	41 to 60	Green
4	61 or greater	Blue

**Creative challenge:** Is the state park you are visiting in a wet or dry part of the state?

Why do you think so? \_\_\_\_\_

\_\_\_\_\_

\_\_\_\_\_

\_\_\_\_\_

# This is my home



Draw a picture of your home.



**Did you know?**  
A beaver's home is called  
a lodge.



A word for an animal's home is habitat.

Unscramble the words below to learn what all habitats have in common.

dfoo = \_ o \_ \_ \_

trewa = \_ a \_ \_ \_ r

lter she = \_ s \_ \_ \_ l \_ t \_ \_ \_

acesp = \_ p \_ a \_ \_ \_

**Creative challenge:** What wildlife do you think live in the state park and why?  
Remember to always give wildlife a safe distance and never feed wildlife.

---

---

---

# Craft a critter



Animals have special skills that help them find food, protect themselves and build their homes. These skills are called adaptations. Make up your own animal and draw it with special skills or adaptations that help it survive.

*Have fun and be creative!*



Washington's state amphibian, the Pacific tree frog, changes color based on the air temperature throughout the year. This helps the frog hide from predators.

What are your animal's special skills or adaptations?

---

---

**Creative challenge:** If you could develop a special skill or adaptation, what would it be?

---

---

---

---

---



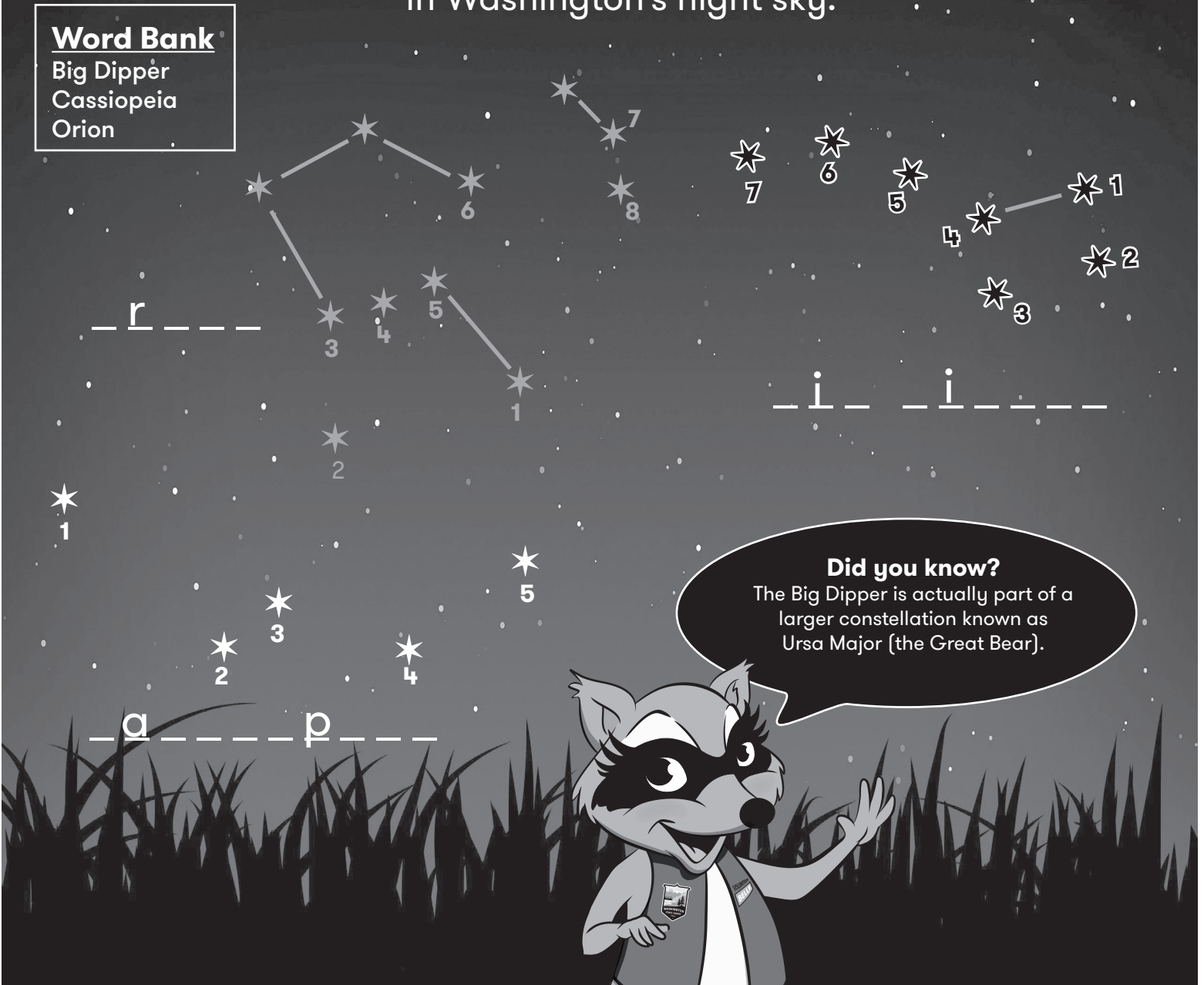
# Constellation connections

The stars are always above us, although sometimes we cannot see them. Early explorers relied on the stars to find their way home or navigate. The alignment of stars can make shapes of objects, people and animals. Many cultures used these shapes, called constellations, to tell stories of creation and mythology.

Connect the dots to find three constellations commonly found in Washington's night sky.

### Word Bank

Big Dipper  
Cassiopeia  
Orion



**Creative challenge:** Try stargazing! How many constellations can you find? \_\_\_\_\_



# Early explorers



In November of 1805, the Lewis and Clark Expedition traveled across the United States to reach the Pacific Ocean. During their journey, they took notes as they explored the region, documenting different plants, animals and weather patterns.



**Creative challenge:** Would you enjoy being an early explorer? Why or why not?

---

---

**Explore more:** Learn about the Lewis and Clark Expedition's journey along the Columbia River. Visit the Lewis and Clark Interpretive Center at Cape Disappointment State Park, or spend an afternoon at Sacajawea State Park.



# State park word search

## State parks are fun!

What might you see or do on your next trip?

S Q B E A C H S C C A N O E G  
 W L A K E T D T R A I L L F B  
 I C B R E X P L O R E Z P U L  
 M T R I V E R M W L E A R N P  
 A E V F K T E N T R A N G E R  
 B X U G M O U N T A I N S H L  
 U H M W H Z P R O T E C T I Z  
 R I H A D V E N T U R E L K X  
 Q B I T L I G H T H O U S E J  
 J I S E F Z C A M P F I R E F  
 E T T R O P D I S C O V E R O  
 E N O F R S Z C P L A N T S R  
 B H R A E D Y A N I M A L L T  
 K L Y L S S A F E T Y X L B H  
 T Z S L T R E E E T V F I S H

ADVENTURE LEARN  
 ANIMAL LIGHTHOUSE  
 BEACH MOUNTAINS  
 CAMPFIRE PLANTS  
 CANOE PROTECT  
 DISCOVER RANGER  
 EXHIBIT RIVER  
 EXPLORE SAFETY  
 FISH SWIM  
 FOREST TENT  
 FORT TRAIL  
 FUN TREE  
 HIKE WATERFALL  
 HISTORY  
 LAKE

**Creative challenge:** What do you love to do in state parks?

---



---



---



---



---



---



---



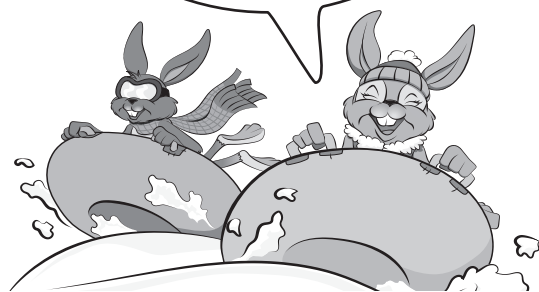
---

Washington State  
 Parks was created in 1913.  
 Pretend that today is  
 State Parks' birthday.  
 How old would we be?

Year

- 1913

=



# Only You



You can do your part to care for state parks by making good decisions for the planet in your very own community. How will you help take care of state parks? Choose at least one way.

I will ... turn off the water while I brush my teeth.

I will ... reduce, reuse and recycle my trash.

I will ... turn off lights when I leave a room.

I will ... stay on trails when I explore.

I will ... \_\_\_\_\_



## Create your own Junior Ranger pledge

I promise ...

---

---

---

---

---

Protect Share Plants Serve  
Explore History Discover Play  
Learn Adventure Fun Animals

As a Junior Ranger,  
I promise to play in,  
learn about and protect  
Washington state parks



Funding provided by the Washington State Parks license plate program.

# Congratulations!

This is to certify

---

(your name)

has completed all requirements and is an official  
Washington State Parks

# Junior Ranger

---

(Park staff/volunteer signature)



---

(Date)

