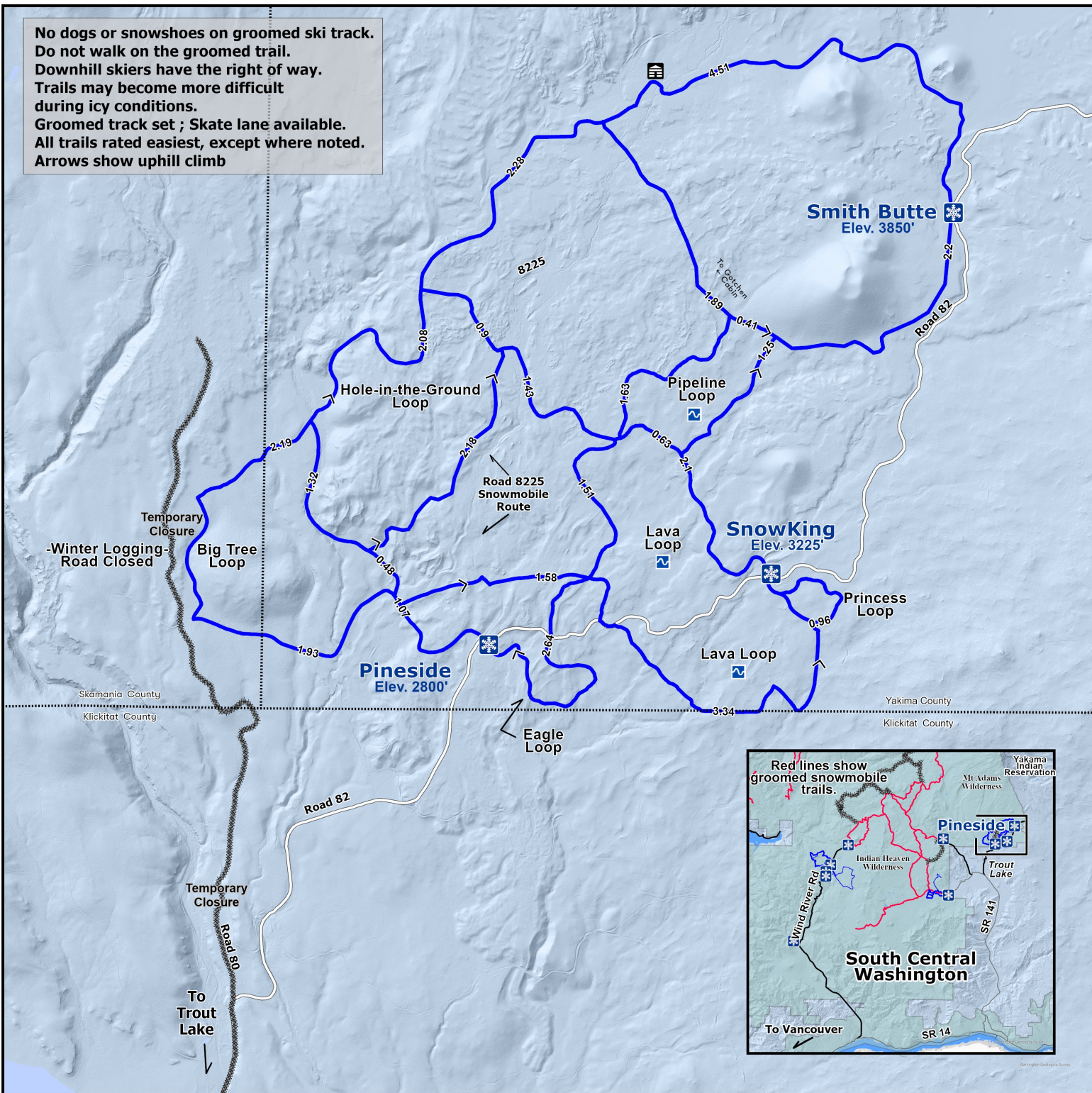


No dogs or snowshoes on groomed ski track.
 Do not walk on the groomed trail.
 Downhill skiers have the right of way.
 Trails may become more difficult during icy conditions.
 Groomed track set ; Skate lane available.
 All trails rated easiest, except where noted.
 Arrows show uphill climb

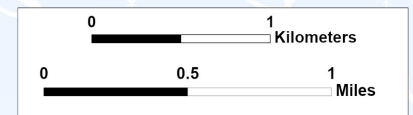


Welcome Pineside, Snow King, & Smith Butte Sno-Parks

Groomed Trail System

- Sno-Park
- Groomed Ski Trail
- Temporary Closure
- Access Road
- Major Forest Road
- County Line
- Gotchen Creek Cabin / Guard Station

- Easiest
- More Difficult
- Most Difficult



Eastside Trail System has 25 miles (40km) of groomed cross country ski trails.



Snow grooming equipment may be on the trail at any time.

Trail grooming schedules may change without notice due to snow conditions, temperatures, equipment breakdowns, etc.

Be aware of potential avalanche danger, check www.nwac.us before you leave home.

Trail grooming schedules and maps at parks.wa.gov/find-sno-parks
 Please report errors or comments to: winter@parks.wa.gov



For Emergency
 Call 911
 Yakima Co. Sheriff
 509-574-2500
 Skamania Co. Sheriff
 509-427-9490

